



Indi-AC[®] Dimensional Gaging Components





P.O. Box 220, 606 County Street, Milan, MI 48160-0220

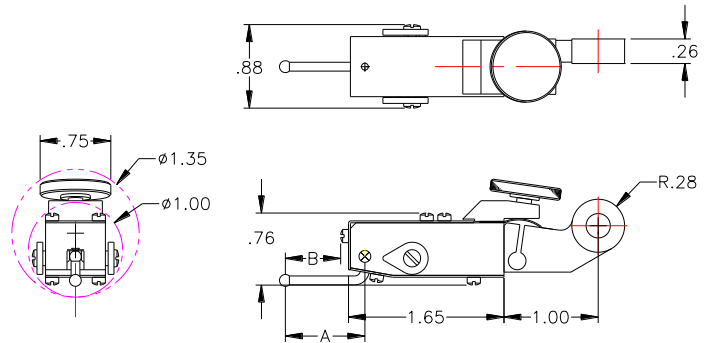
Phone (734)439-2462, Fax (734)439-1461

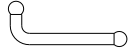

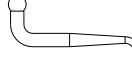

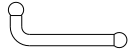

Website: <http://www.predev.com>

e-mail: sales@predev.com

AMPLIFIER	PART NO.	DESCRIPTION
 <p>SPECIFICATIONS ON BACK PAGE</p>	4550-FA-210	PGA-210 Single Channel, solid state dimensional gaging amplifier for use in: surface plate work, runout, height gage indicator, size variation and set-up verification.
	4550-FA-220	PGA-220 Dual Channel, solid state dimensional gaging amplifier for use in: surface plate work, runout, height gage indicator, size variation and set-up verification.

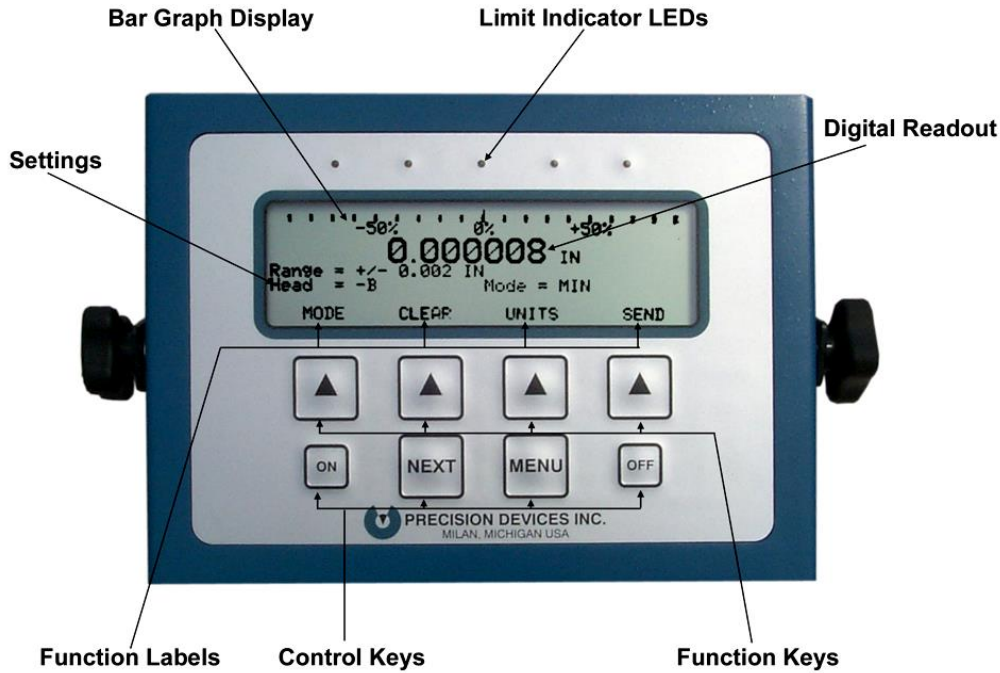
T-425 GAGE HEAD	PART NO.	DESCRIPTION
 <p>Tip is not provided in gage head price.</p>	4410-FA	T-425 Gage Head, lever type, breakaway feature to protect tips. Includes adjustment wrench. Has fine mechanical adjustment of 0.045" (1.14mm) for standard gage tips and 0.090" for 2X. Gaging force: 0 to 0.5g over a gaging range of ±0.020" for standard gage tip; with 2X tip: 0 to 0.3g force over a range of ±0.040".



T-425 GAGE TIPS	PART NO.	DESCRIPTION
	4986-P, CP-320 1/8" Ø Tip 4987-P, CP-321 1/16" Ø Tip 4988-P, CP-322 1/32" Ø Tip	Carbide Ball A = Tip Length: 0.840" B = Clearance Length: .590,
	4989-P, CP-324 1/64" Ø Tip	Carbide Ball A = Tip Length: 0.840" B = Clearance Length: .590,
	4990-P, CP-320-Z, 1/8" Ø Tip 4991-P, CP-321-Z, 1/16" Ø Tip 4992-P, CP-322-Z, 1/32" Ø Tip	Carbide Ball - Z Form A = Tip Length: 0.840" B = Clearance Length: .590,
	4993-P, CP-320-2XA, 1/8" Ø Tip 4994-P, CP-321-2XA, 1/16" Ø Tip 4995-P, CP-322-2XA, 1/32" Ø Tip	Carbide Ball - 2X Lg. A = Tip Length: 1.680" B = Clearance Length: 1.436,
	4996-P, CP-320-SA, 1/8" Ø Tip 4997-P, CP-321-SA, 1/16" Ø Tip 4998-P, CP-322-SA, 1/32" Ø Tip	Sapphire Ball A = Tip Length: 0.840" B = Clearance Length: .590,
	4999-FA CPTK-A	Tip Kit (includes (1) each of the following: CP-320, CP-321, CP-322, CP-321Z, CP-321-2XA and CP-321-SA) (Ref. 70458391)

NOTE: Special tips also available.

T-504A CARTRIDGE GAGE	PART NO.	DESCRIPTION
	5100-FA	T-504A Cartridge Gage Assembly with Tip Gage Tip: 5/32" diameter carbide tip with #4-48 male thread, Gaging Force: 51g (at null position), Gaging Range: 0.040"
HEIGHT STANDS	PART NO.	DESCRIPTION
 <p data-bbox="94 1182 293 1209">6787-FA GS-2010</p> <p data-bbox="354 1182 597 1241">4650-FA GS-P-2412 & 5178-FA S-1311-S3</p>	<p data-bbox="708 527 808 554">6787-FA</p> <p data-bbox="708 842 808 869">4650-FA</p> <p data-bbox="708 1161 808 1188">5178-FA</p>	<p data-bbox="870 527 1336 779">GS-2010 18" Height Stand (Ref 71001194) Base dimensions: 6.2" x 5.0" x 2.5" (159mm x 127mm x 64mm) Vertical capacity: 20" (508mm) Crossarm type: Rotating Crossarm adjustment: 10" (254mm) Overall height: 19" (483mm) Weight: 14.5 lbs (6.6 kg)</p> <p data-bbox="870 814 1360 1066">GS-P-2412 24" Height Stand (Ref. 71001199) Base dimensions: 7.0" x 6.0" x 3.0" (178mm x 152mm x 76mm) Vertical capacity: 24" (610mm) Crossarm type: Positive Drive Crossarm adjustment: 12.0" (304mm) Overall height: 25" (635mm) Weight: 30 lbs. (13.6 kg)</p> <p data-bbox="870 1102 1511 1192">36" S-1311-S3 Special Height Stand (Ref. 70156938) Same specification as GS-P-2412 above and a height of 36"</p>
	4985-FA	Comparator Stand Assembly, general purpose stand that accepts electronic gaging cartridge having a 3/8" (9.5mm) diameter. Consists of a heavy cast iron base, cylindrical steel column with saddle assembly adjustable vertically, and anvil, 2" (50.8mm) diameter. Height capacity and vertical adjustment 3.25" (82mm) throat depth, to front of column 2.43" (62mm) w/.094" (3.3mm) range fine vertical adjustment.
ANALOG METER	PART NO.	DESCRIPTION
	4984-FA	PAM-1 Analog Meter with metric and English full range scales. Includes 4 1/2' cable. Dimensions: 5" W x 4 1/4" D x 4 3/4" H Weight: 1 1/4 lb.
	4525-OP	PGA Series Operating Manual



PGA SPECIFICATIONS

Parameter	Specification	Parameter	Specification
Range Settings:	inches mm	Performance (Update Rates):	1 Channel 2 Channel
Bar Graph and Analog Output	± 0.00002 ± 0.0005	Transducer Data Collection	1.2 mS 2.9 mS
	± 0.0001 ± 0.0025	Analog Output (Actual Mode)	1.2 mS 2.9 mS
	± 0.0002 ± 0.005	Analog Output (All Other)	200 mS 200 mS
	± 0.001 ± 0.025	Calculated Reading (MIN.,	4.8 mS 11.6 mS
	± 0.002 ± 0.05	MAX., F.I.M., AND	
	± 0.01 ± 0.25	Display Update:	200 mS 200 mS
	± 0.02 ± 0.5	RS232 Port:	
Numerical Display	up to ± 0.08 ± 2.0	Available Baud Rates	300, 600, 1200, 2400, 4800, 9600, 19200 or 38400
Output Resolution:		Parity Settings	NONE, EVEN, ODD
Bar Graph Display (narrow)	0.83% of selected range	Primary Input	Single character command
(wide)	1.67% of selected range	Primary Output	Displayed numerical value
Analog Output	0.024% of the selected range	Supplemental Status (Output(s))	UNITS, HEAD, MODE, Limit Status or any combination
Numerical Display	0.000,001 inch (0.000,01 mm)	Available Line Terminations	NONE, CR, LF or CR + LF (CR = carriage return, LF = line feed)
Amplifier Accuracy:		Hardware Handshaking	ENABLE or DISABLE
PGA-210 (Single Channel Unit)	<1 µIN (0.025 µm)	Power Requirements:	
PGA-220 (Dual Channel Unit)	<2 µIN (0.050 µm)	Amplifier Input	5 volts DC at 2.0 amperes
System Accuracy:		Power Pack Output	5 volts DC at 2.5 amperes
PGA-210 (Single Channel Unit)	<4 µIN (0.100 µm)	Power Pack Input	100 - 250 volts AC at 0.4 Amps, 47-63 Hz
PGA-220 (Dual Channel Unit)	<5 µIN (0.125 µm)	Environmental:	
Bar Graph Display Output:	Nominal ± 100% proportional to reading in selected range	Operating Temperature Range	50° - 90° F (10° - 32° C)
Analog Output:	Nominal ± 5 volt proportional to reading in selected range	Storage Temperature Range	30° - 110° F (-1° - 43° C)
Limit Indicator Outputs:		Relative Humidity	10% - 90% non-condensing
Indicators (LED)	Pass: Green Caution: + and - Yellow Fail: + and - Red	Physical Size (L x W x D):	
Range Limit Settings	Independent + and -	Dimensions (excluding handle)	9.25" x 6.25" x 2.5" 23.5 cm x 15.9 cm x 6.4 cm
Adjustable Cautionary Settings	Percentage of range limit settings	Weight	4 lbs (1.8Kg)